



easat[®]
RADAR SYSTEMS

X-BAND TRANSCIEVER

The X-Trac, X-Band Solid-State Transceiver is design for use in SMR, PAR and Coastal Radar Systems. It utilises advanced signal processing techniques to detect small targets in harsh environmental conditions.

The transceiver delivers high-performance, low-maintenance, high availability and reliability surveillance with customisable system parameters, such as pulse frequencies and compression, frequency diversity and equipment redundancy.

Coherent, solid-state pulse
compression transceiver

Digital configuration customizable
through software-defined capability

Fully integrated BITE functionality

Operational frequencies are fully
configurable (501 carrier frequencies)

Super-heterodyne linear receiver

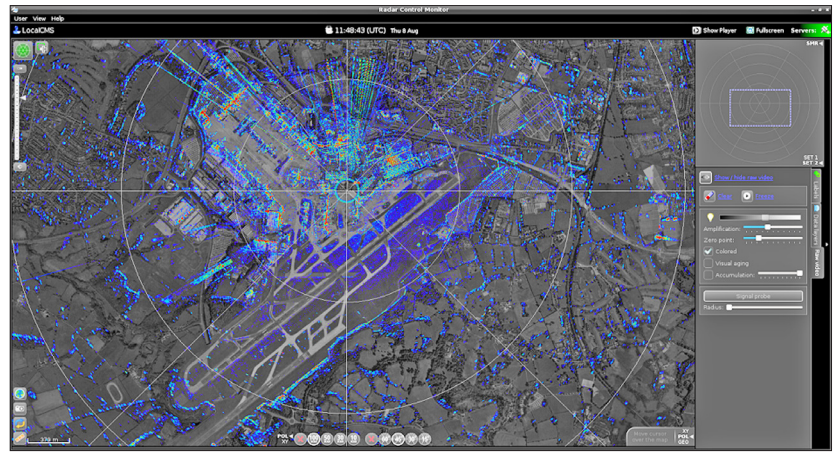
Overall dynamic range 140 dB is provided
by an additional EDR channel



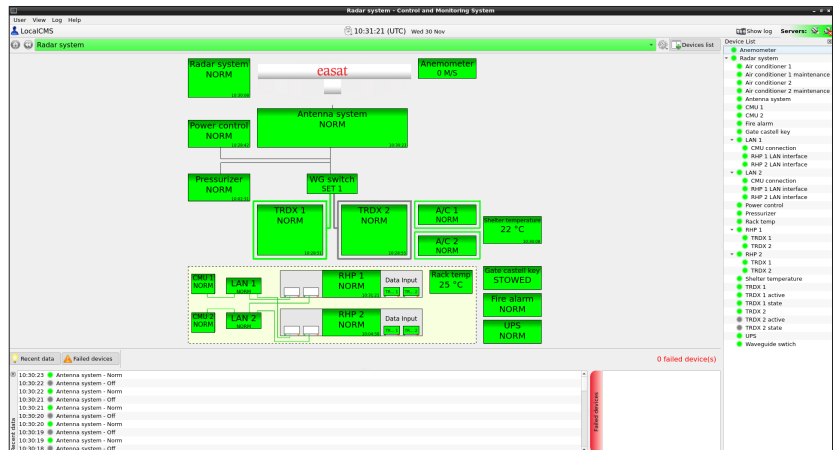
easat.com
info@easat.com

Easat's X-Band Transceiver comes equipped with a State-of-Art Control and Monitoring System (CMS) and Built-In-Test-Equipment (BITE).

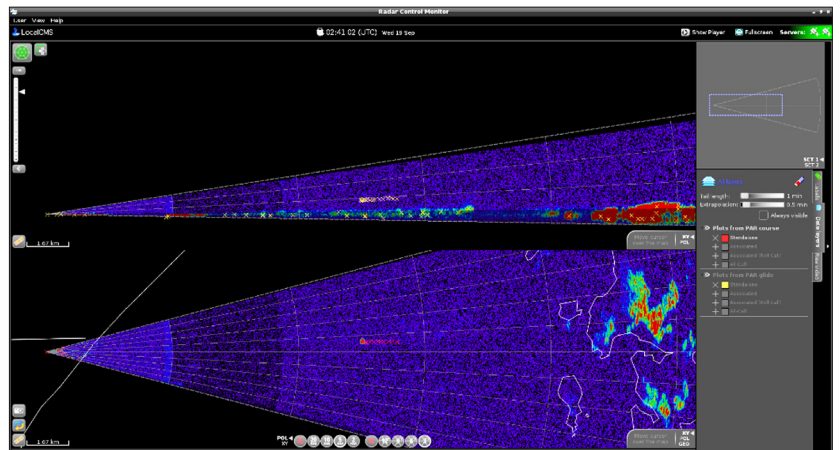
- Local and Remote Terminals (Computer, Display, Keyboard, and Mouse)
- Various Built-in-Test-Equipment Sensors and Controllers distributed in Radar System and Auxiliary Equipment
- Telecommunications and Network Equipment
- Software for System Status Visualisation. The Software package is Fully Field-Proven by usage in numerous Installations as part of PSR, MSSR, PAR, ADS-B and SMR Systems
- Identify the Current Radar System Operating Mode and Settings
- Determine the failed components and sub-systems of the Radar System
- Display Radar System Status on LCT/RCT screens, Unit Panels and Shelters
- Provide Visual and Audible Alarms in case of Failure
- Reconfigure the Radar System when Failure state is detected. Such Reconfiguration can be done Automatically or Semi-Automatically
- Provide Repair recommendations in case of failure
- Provide Formalised Reliability Reports and Logs based on Recorded Data
- Tailored Spares, Maintenance & Upgrade Packages available



SMR Raw display on CMS



SMR Control Monitoring System Display



PAR Raw display on CMS



PAR Control Monitoring System Display